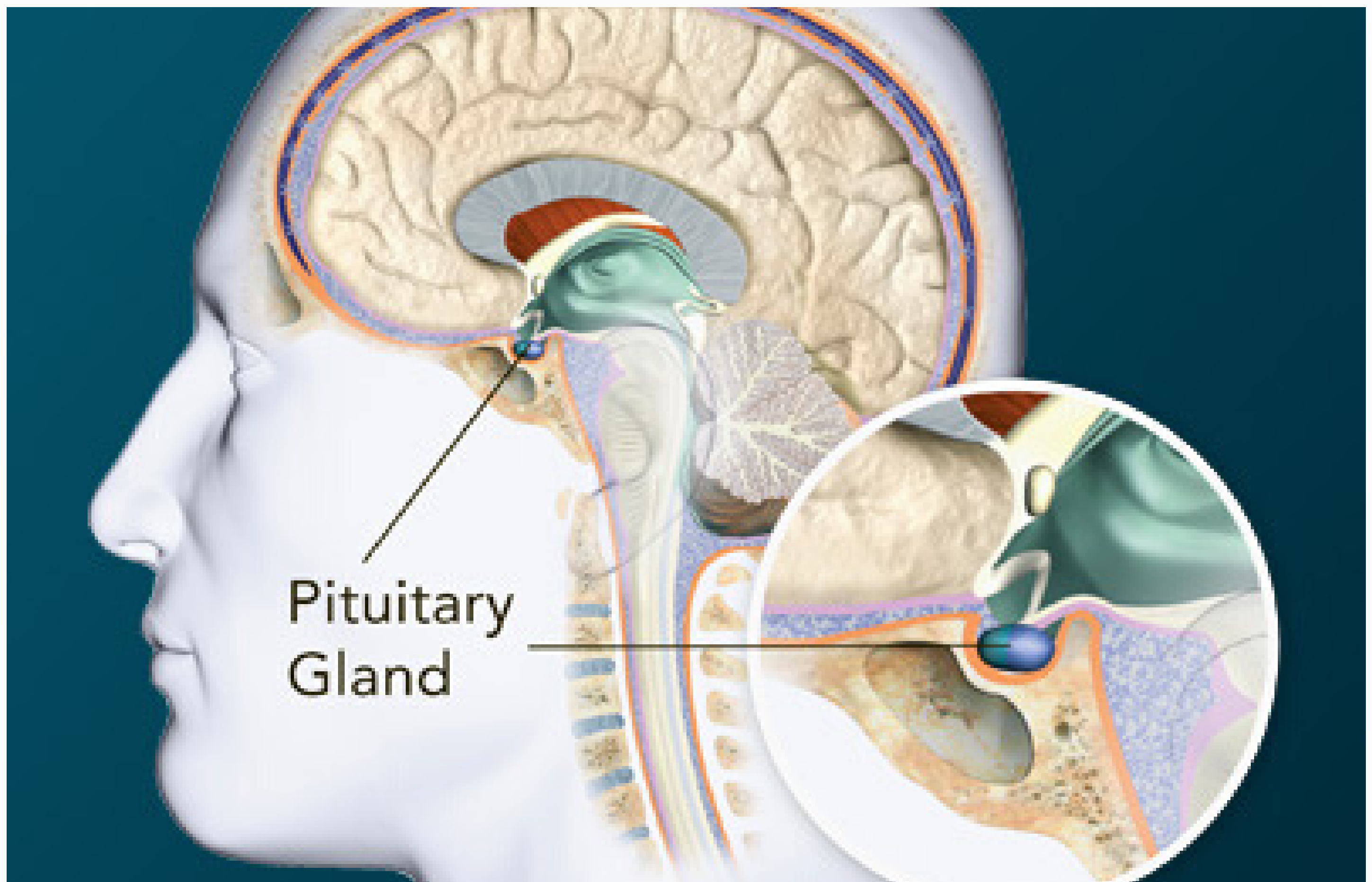


# WANTED



## PITUITARY GLAND

IS 0.5 GRAMS. ITS FUNCTION IS TO PRODUCE HORMONES INTO YOUR BLOODSTREAM. IT WORKS WITH THYROID, BLOOD AND THE REPRODUCTIVE SYSTEM. IT MAY COME WITH ADULT GROWTH HORMONE DEFICIENCY, ACROMEGALY, AND PROLACTINOMA

**APPROACH WITH EXTREME BECAUSE WITH  
OUT IT YOU WONT BE ABLE TO GROW  
PROPERLY**

If you see any traces of neural or glandular tissue call the police at 123-456-7890.