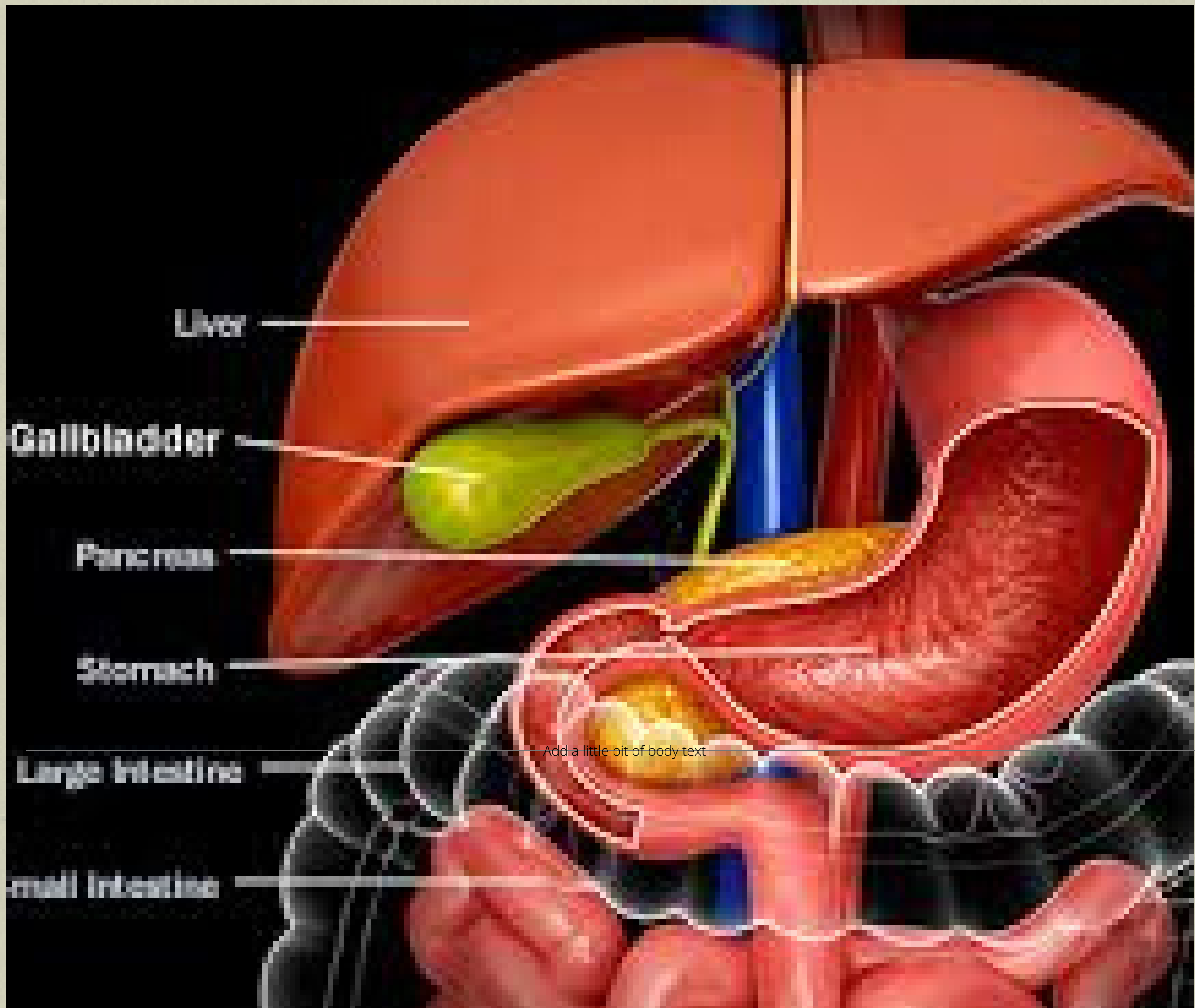


# WANTED



## Information of gall bladder

- Made up of mucosa-the inner layer of epithelial cells and lamina propria, a muscular layer of smooth muscle perimuscular layer-connective tissue that covers the muscular layer, serosa-the outer coverage of the gall bladder
- Height: 2.8-3.9 inches
- Works like a storage
- The liver contains the gall bladder
- The gallstones, cholecystitis, and gall bladder polyps can affect the gall bladder

**REWARD \$1000**

if you have information about this gall bladder contact us at,  
142-Gall\_Bladder-cather